

REDUCED PRICE OCTOBER 2021

Colliers  
INTERNATIONAL

Accelerating success

# Accessible Forested Wilderness Island

BATCHAWANA ISLAND  
5,200 Acres on Lake Superior  
in Northeastern Ontario

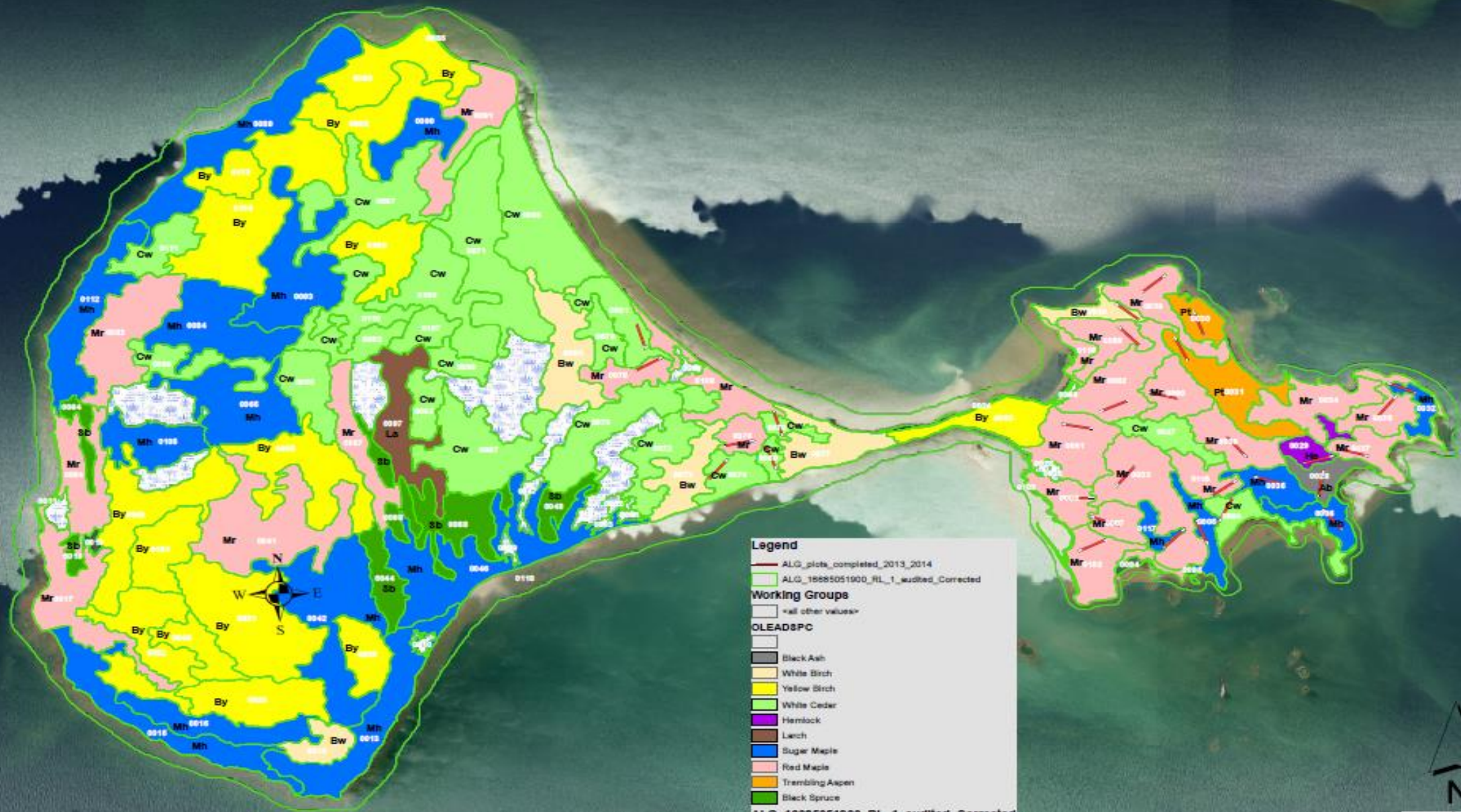
ONE OF A KIND PROPERTY



R&B CORMIER INC.

Boots on the ground and Eyes in the Sky since 1989





**Legend**

- ALG\_plots\_completed\_2013\_2014
- ALG\_16685051900\_RL\_1\_audited\_Corrected

**Working Groups**

- <all other values>

**OLEAD8PC**

- Black Ash
- White Birch
- Yellow Birch
- White Cedar
- Hemlock
- Larch
- Sugar Maple
- Red Maple
- Trembling Aspen
- Black Spruce

**ALG\_16685051900\_RL\_1\_audited\_Corrected**

- <all other values>

**POLYTYPE**

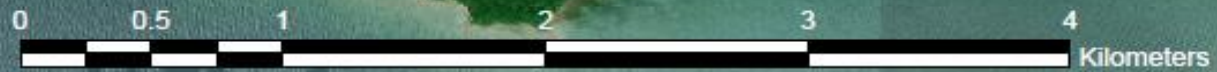
- Wetlands
- Treed Wetlands

0 0.5 1 2 Kilometers





# BATCHAWANA ISLAND





# RECENT SURVEYS, ANALYSIS & MAPS

2016 Forest & Land Class Inventory:

2016 3D Land Mapping:

2018: Cultural, Flora/Fauna Surveys



**R & B CORMIER INC.**

Natural Resource Inventory & Aerial Imagery Contractors Since 1989

© MARCH 2016

**BATCHEWANA ISLAND:**  
*PRELIMINARY RESOURCE ANALYSIS & DEVELOPMENT REPORT*



TO: John Creba, Colliers International Fall of 2020

BY: Robert G. Cormier, President, Forestry Technologist  
Brian P. Callaghan, Associate, Ontario Registered Professional Forester

Accounting & Mailing: 19 Cowton Avenue, Sault Ste. Marie, Ontario, Canada P6A 3T4 • Email: [rc.cormier@rbcormier.com](mailto:rc.cormier@rbcormier.com)  
Operations: 1530 Queen St. E., Room 217, Sault Ste. Marie, Ontario, Canada P6A 2G2  
Tel: (705) 575-7217 • Website: [www.rbccormier.com](http://www.rbccormier.com)

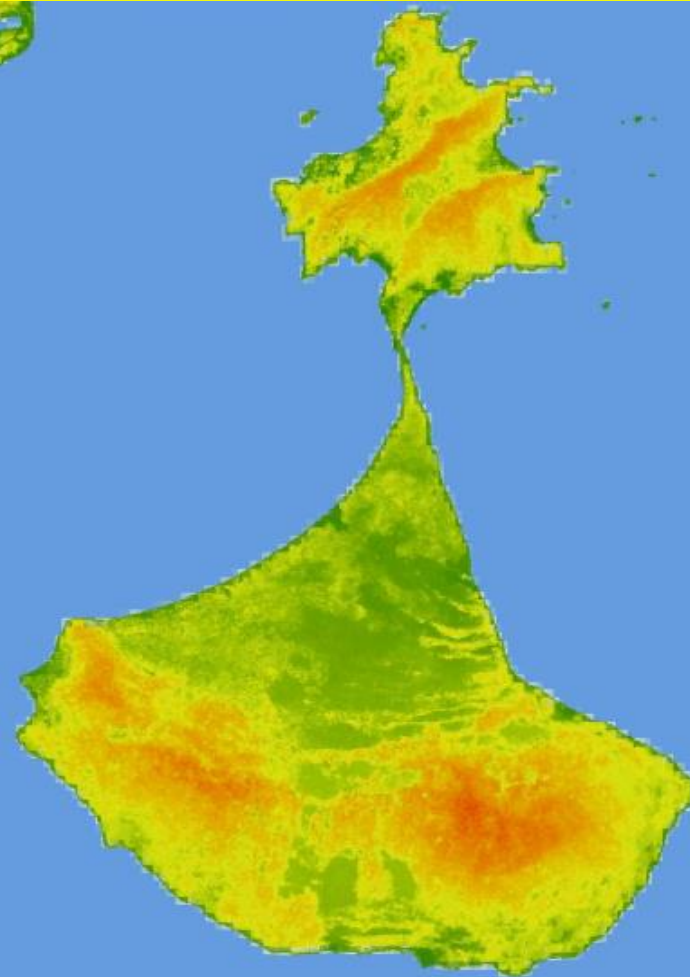
**PRIMARY CONTACT:**

**John Creba**

Vice President, Sales Representative

Direct +1 416 643 3721 | Mobile +1 416 500 2520 | [View my profile](#)

[John.Creba@colliers.com](mailto:John.Creba@colliers.com)



## BATCHEWANA ISLAND

PRELIMINARY WILDLIFE ASSESSMENT REPORT  
Avifauna and other Wildlife  
September 2018

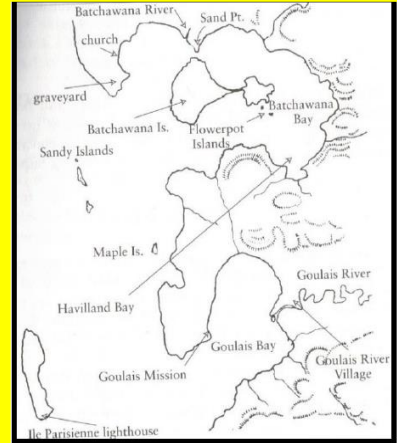


To: Lake Superior Watershed Conservancy  
By: Ken McIlwrick – Wildlife Biologist

Contact Information  
Phone: 705-949-2864  
Email: [kmmnorth@shaw.ca](mailto:kmmnorth@shaw.ca)  
Postal Address: 39 Pleasant Drive, Sault Ste. Marie, Ontario, Canada, P6B 4E1

**Common Name**

- Eastern Red-backed Salamander
- American Toad
- Gray Treefrog
- Spring Peeper
- Green Frog
- Mink Frog
- Wood Frog
- Red Squirrel
- Beaver
- Porcupine
- Coyote
- Timber Wolf
- Red Fox
- Black Bear
- Raccoon
- Marten
- Mink
- Moose



**MAPPING & NATURAL RESOURCE CONTACT:**

**Robert Cormier**

President, R&B CORMIER INC.

Office +1 705 575 7217 | Mobile +1 705 987 2457

[www.rbccormier.com](http://www.rbccormier.com) | [rg.cormier@rbccormier.com](mailto:rg.cormier@rbccormier.com)

**Colliers International**

181 Bay Street, Suite #1400 | Toronto, ON M5J 2V1 | Canada  
Main +1 416 777 2200 | Fax +1 416 777 2277

[www.collierscanada.com/en-CA/Experts/John-Creba](http://www.collierscanada.com/en-CA/Experts/John-Creba)